



## Build a Bee Number Game

Learn all about the different parts of a honeybee with this number recognition game for 2 or more people. Don't forget to check out the facts about each body part as you build your bee!

### Aim of the game:

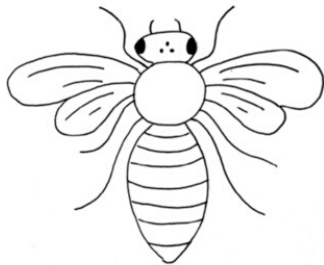
To be the first person to complete a drawing of a honeybee.

### You will need:

- A piece of paper and pen/pencil each.
- A dice.

### How to play:

Each player takes it in turns to roll the dice. They then look at the table below to see which part of the honeybee they can draw, depending on the number they have rolled. Players must roll a 3 for the thorax to start and must roll a 6 for the head before they can add the antennae or eyes.



The first person to complete their honeybee shouts 'BUZZ.'

Number to roll	Body part	Top fact
3	Thorax	The muscles in the thorax control the movement of the wings, helping honeybees to fly from flower to flower.
1	Abdomen	Only two types of honeybee in a colony - the worker bee and the queen bee - have a stinger. This can be found at the end of the abdomen.
6	Head	The honeybee brain, which is located in the head, is the size of a sesame seed. Despite this, honeybees are incredibly intelligent insects.
6	Legs x 6	A honeybee has 6 legs. The rear pair is covered in stiff hairs which allow honeybees to store pollen and transport it back to the hive.
4	Wings x 4	Honeybees have 4 wings, a small pair and a large pair. The buzzing that we hear is actually the sound of a honeybee rapidly beating their wings.
2	Antennae x 2	A honeybee's antennae are covered in thousands of tiny sensors. These sensors are vital as they allow honeybees to taste, smell and feel.
5	Eyes x 5	Honeybees have two large eyes and three small ones (on the top of their head). They can see colour but not the colour red.